



**HITACHI S-9200**  
**Vintage 1999 200mm**

## HITACHI S-9200

Vintage 1999 200mm

Location warehouse Nijmegen condition “As is”

**Manufacturer:** HITACHI

**Type:** S-9200

**Date of manufacture:** Sept 1999

**Software revision:** 1.07 PMv.02.16M

HITACHI S-9200 is a world-leading scanning electron microscope (SEM) that provides crystal clear images of microscopic samples. It is capable of producing magnifications from 20x to 500,000x, and offers a magnification range of more than 10,000 times.

HITACHI S 9200 features an electron source called a Schottky field emission gun (FEG). This type of electron source is renowned for providing higher resolution images than conventional electron guns.

S 9200's advanced motorized stage and automated sample exchange function make specimen loading and operation easy.

HITACHI S-9200 is equipped with an Image Analysis System (IAS), which features an image processing algorithm that is capable of detecting and isolating features from background noise. This makes it possible to quickly extract information from complex images and draw accurate conclusions from experiments.





**HITACHI S-9200**

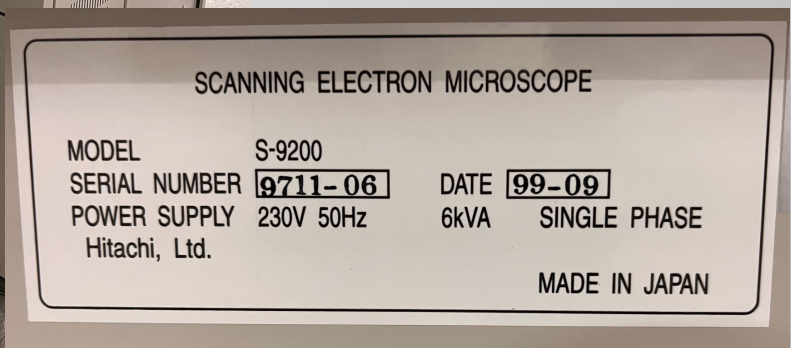
**Vintage 1999 200mm**

**Location warehouse Nijmegen condition "As is"**





**HITACHI S-9200**  
**Vintage 1999 200mm**  
**Location warehouse Nijmegen condition "As is"**



# Solutions on Silicon BV

*Your service partner for LAM Research Equipment*

- **Equipment Support**  
PM, CM, Trouble shooting, Upgrading, Training and Onsite Service Contracts
- **Process Support**  
Process design, Improvement, Fab-to-Fab Transfer and Integration
- **Refurbishment**  
From custom to complete refurbishment
- **Relocation**  
Auditing, Fingerprinting, Decommissioning, Installation, Acceptance
- **Materials**  
Supplier of first class second source materials

