



LAM Research
2300 Exelan Flex 300mm Configuration
SN 23EX1090A

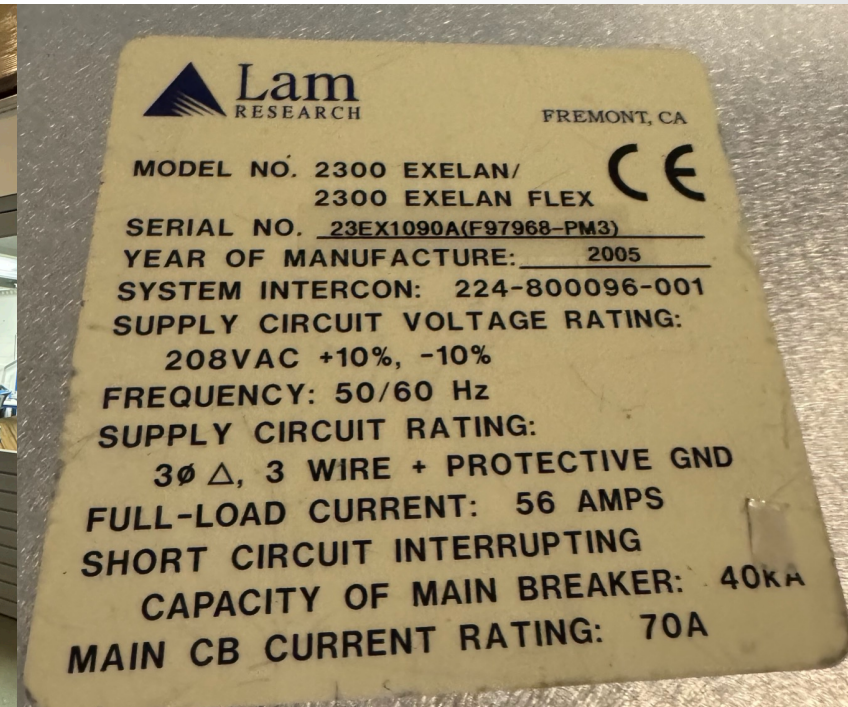
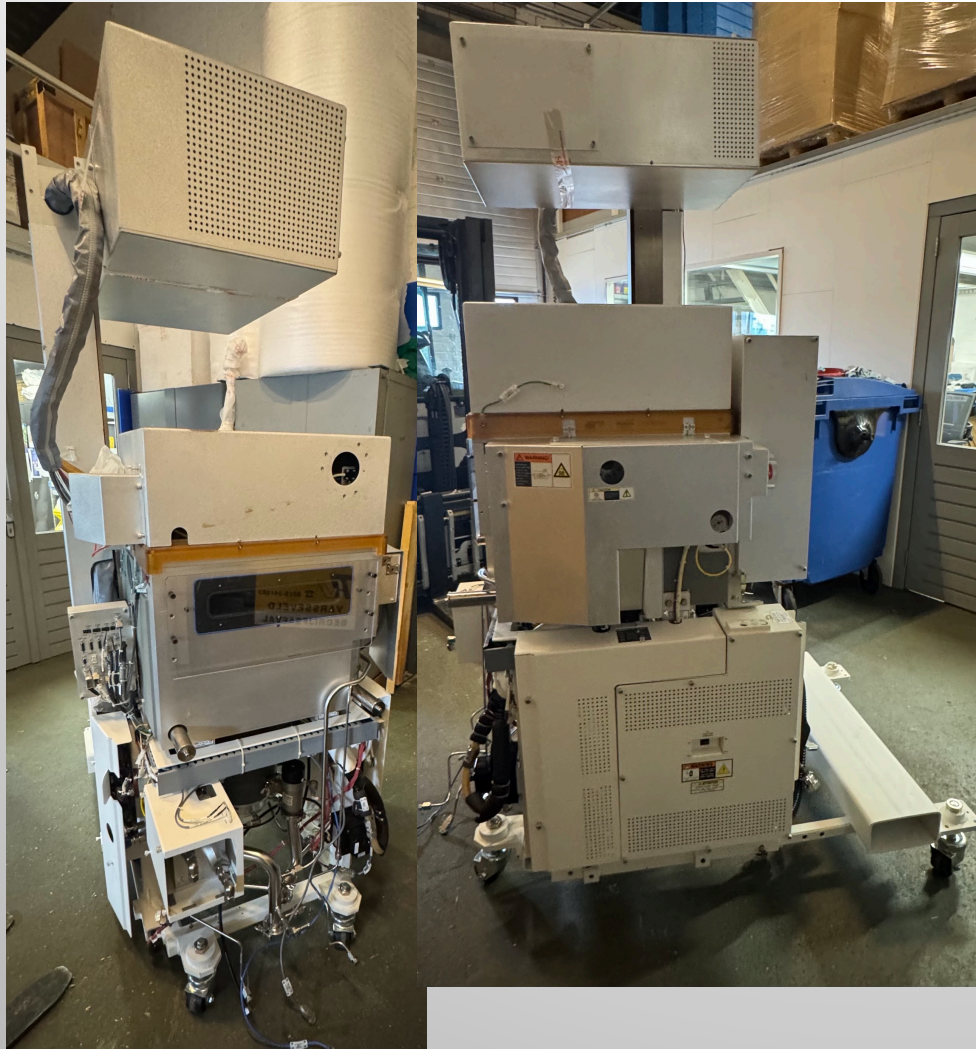
LAM Research
2300 Exelan Flex process chamber
300mm

2300 Exelan Flex

- Oxide Etch
- Vintage 2005
- Wafer size: 12 inch (8 inch possible)
- Condition: AS IS
- Serial nr 23EX1090A



LAM Research
2300 Exelan Flex process chamber
300mm



Solutions on Silicon BV

Your service partner for LAM Research Equipment

- **Equipment Support**
PM, CM, Trouble shooting, Upgrading, Training and Onsite Service Contracts
- **Process Support**
Process design, Improvement, Fab-to-Fab Transfer and Integration
- **Refurbishment**
From custom to complete refurbishment
- **Relocation**
Auditing, Fingerprinting, Decommissioning, Installation, Acceptance
- **Materials**
Supplier of first class second source materials

