



ASMi Epsilon E2000 RP MPI RH
SN 091920
150mm – 200mm

Epi Equipment For Sale by SoS



ASMi E2000 RP MPI Right-handed configuration

Basic configuration:

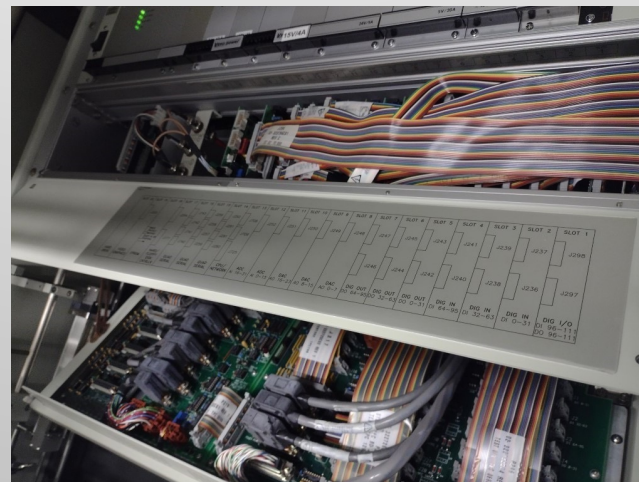
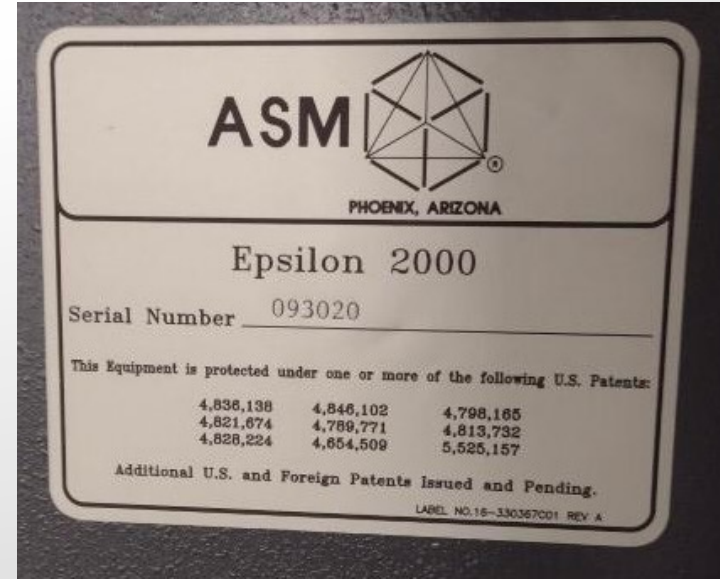
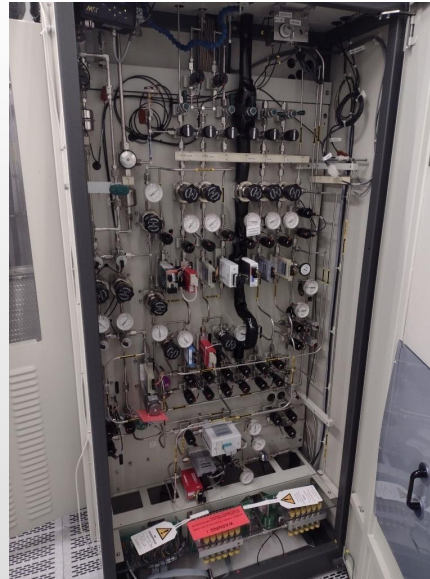
- ASMi E2000 RP incl Load locks
- MPI
- Full functional machine
- Machine serial nr 093020.
- 1999
- Bubbler.
- Currently setup for 150mm wafers



Epi Equipment For Sale by SoS



ASMi E2000 RP MPI Right-handed configuration



www.Solutions-on-Silicon.com

Equipment upgrades by SoS

ASMi E2000 Epitaxy systems

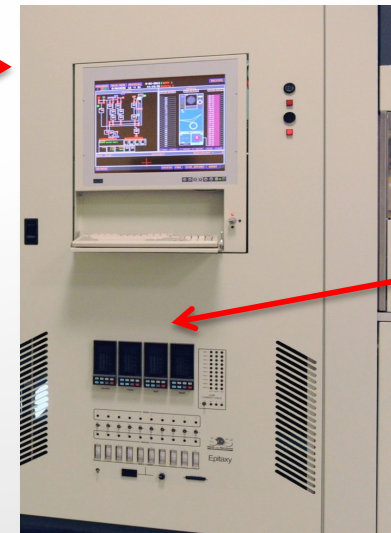
LCD Touchscreens →

Footprint reduction 1.0 by SoS

- Benefits footprint reduction of at least 25%
- Installation Cost reduction due to less interface cables
- Installation time reduction and an easier operation by your engineers and technicians

New style SCR's

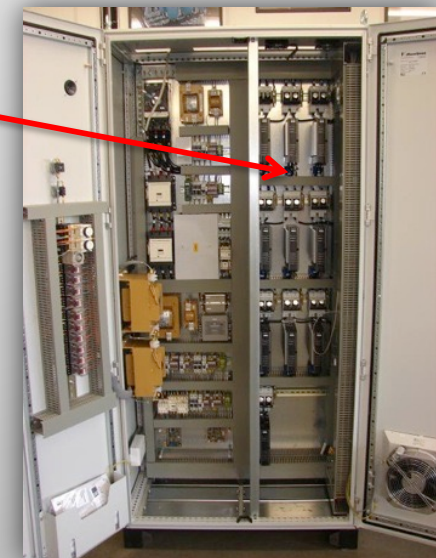
- Benefits easy calibration by laptop, no longer needed to adjust potential meters on life machine (480v)
- Replaceable 1 to 1 with the old style SCR's in the field



Service console integrated in service door

Main Power-distribution cabinet including New Style SCR's

New Style SCR's →



Solutions on Silicon BV

Your ASM A400 & Epsilon service partner

- **Equipment Support**
PM, CM, Trouble shooting, Upgrading, Training and Onsite Service Contracts
- **Process Support**
Process design, Improvement, Fab-to-Fab Transfer and Integration
- **Refurbishment**
From custom to complete refurbishment
- **Relocation**
Auditing, Fingerprinting, Decommissioning, Installation, Acceptance
- **Materials**
Supplier of first class second source materials

