



S O S G R O U P

**Kokusai
QUIXACE MT-SiOCN Furnace
SN C-10139
Vintage 2017**

Kokusai QUIXACEI MT-SiOCN Furnace SN C-10139

Vintage 2017

located Nijmegen the Netherlands

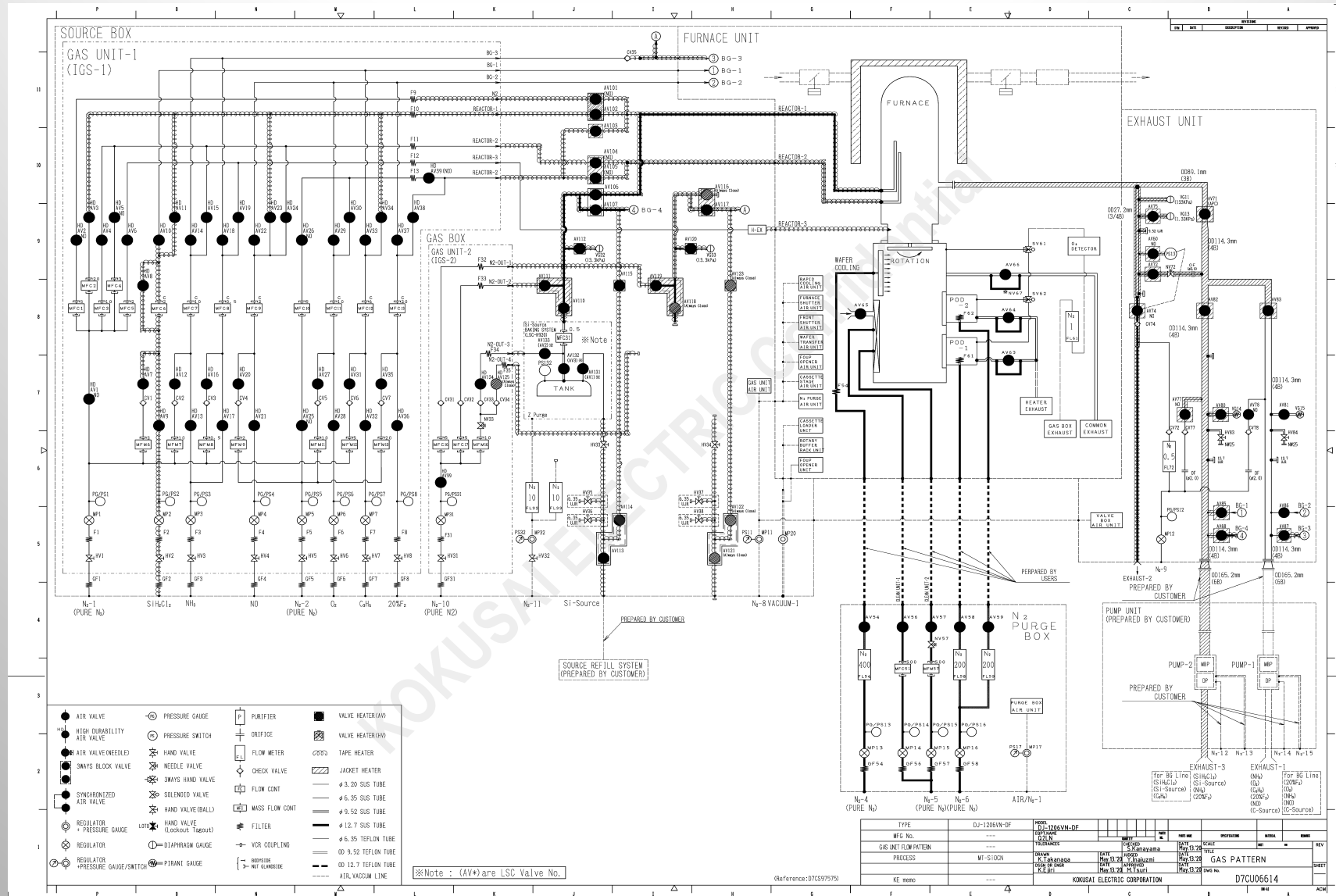
QUIXACEI®-II is a KOKUSAI ELECTRIC's latest platform for batch thermal processing of 300mm wafers. QUIXACEI®-II offers high throughput by utilizing advanced technologies in such areas as temperature control, wafer handling automation, reactor purging.

Features

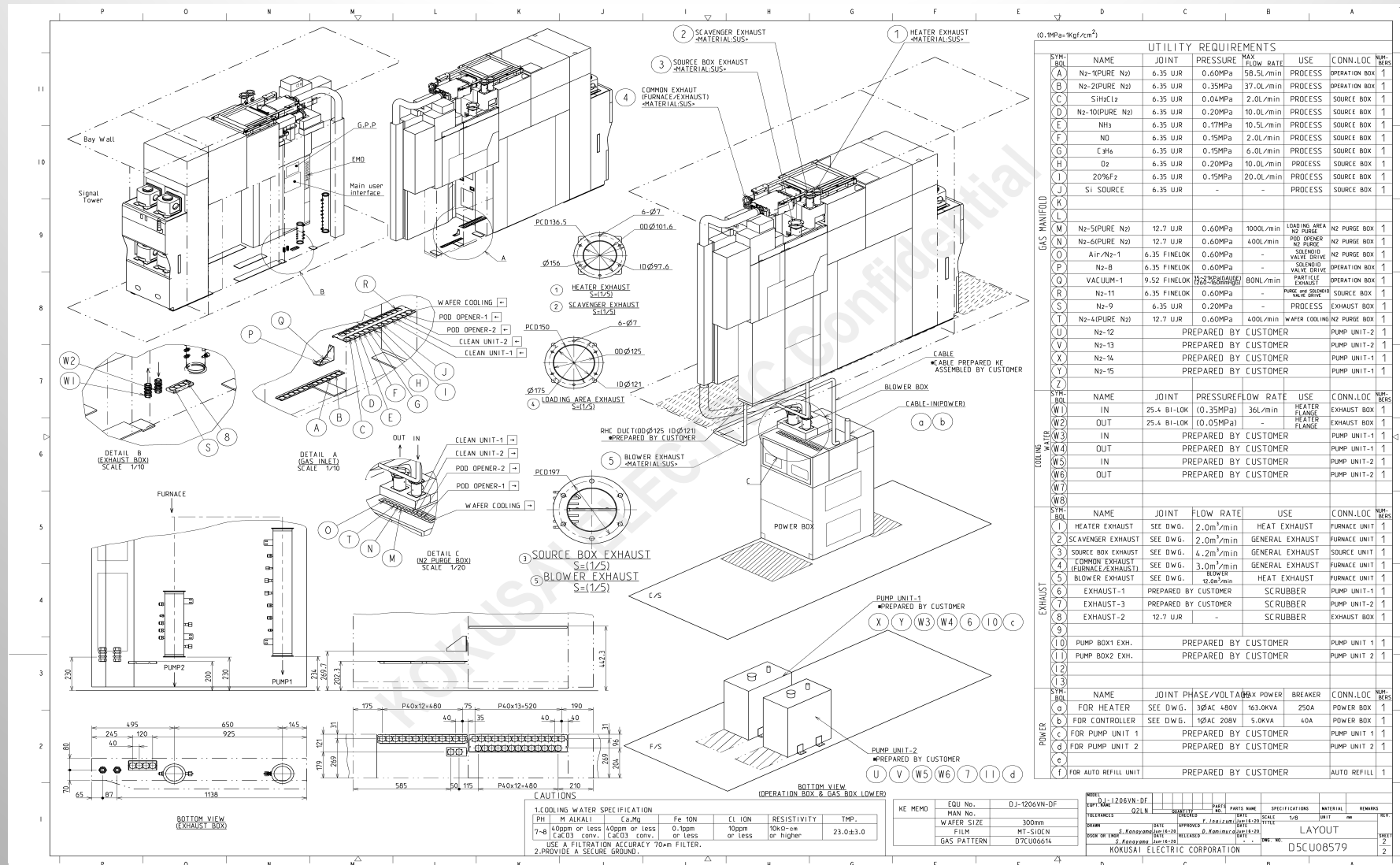
- Achieved high productivity: Improved 1.25times(*) larger lot processing in a time (* Compared with previous model)
- Capable of conformal films into deep trench
- Realized high accurate, high quality film deposition in low temperature
- Health check function (Option)



Kokusai QUIXACEI MT-SiOCN Furnace SN C-10139 Vintage 2017 located Nijmegen the Netherlands



Kokusai QUIXACEI MT-SiOCN Furnace SN C-10139 Vintage 2017 located Nijmegen the Netherlands



Solutions on Silicon BV

Your service partner for LAM Research Equipment

- **Equipment Support**
PM, CM, Trouble shooting, Upgrading, Training and Onsite Service Contracts
- **Process Support**
Process design, Improvement, Fab-to-Fab Transfer and Integration
- **Refurbishment**
From custom to complete refurbishment
- **Relocation**
Auditing, Fingerprinting, Decommissioning, Installation, Acceptance
- **Materials**
Supplier of first class second source materials

