



S O S G R O U P

ASMi Epsilon E2000 RP MPI LH  
SN 880240  
150mm – 200mm

# Epi Equipment For Sale by SoS

## ASMi E2000 RP MPI Left-handed configuration

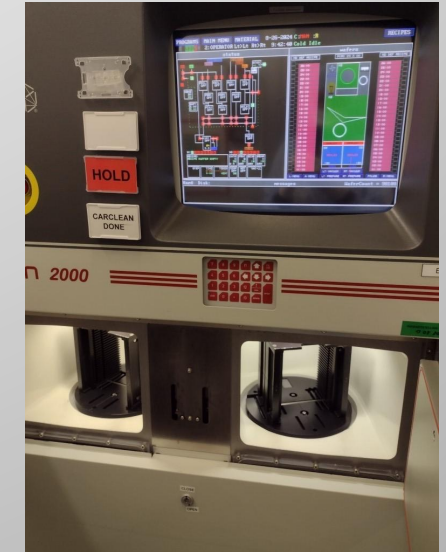
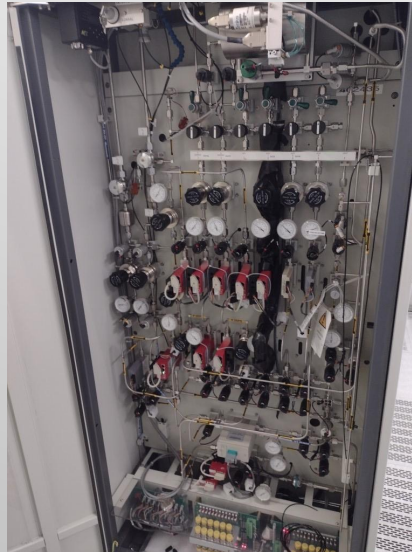
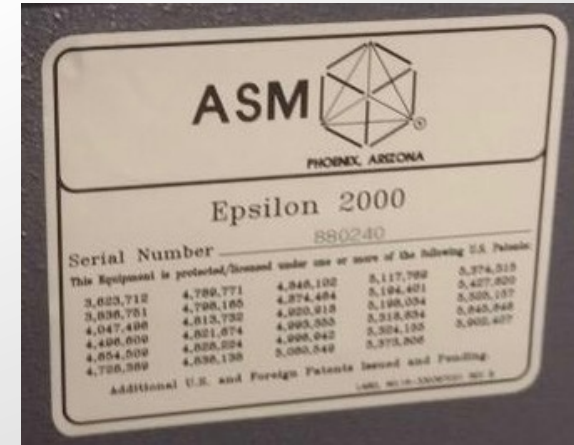
### Basic configuration:

- ASMi E2000 RP incl Load locks
- MPI
- Full functional machine
- Machine serial nr 880240
- 2000
- Bubbler.
- Currently setup for 150mm wafers



# Epi Equipment For Sale by SoS

ASMi E2000 RP MPI Left-handed configuration

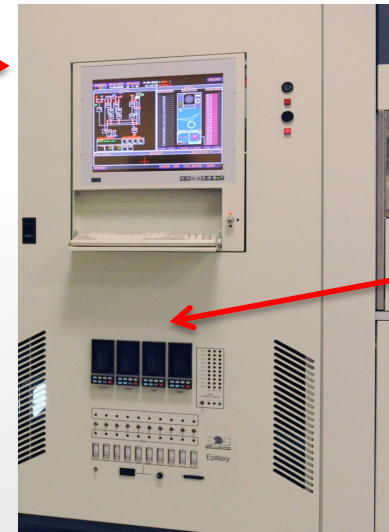




# Equipment upgrades by SoS

## ASMi E2000 Epitaxy systems

LCD Touchscreens →



Service console integrated in service door

Main Power-distribution cabinet including New Style SCR's

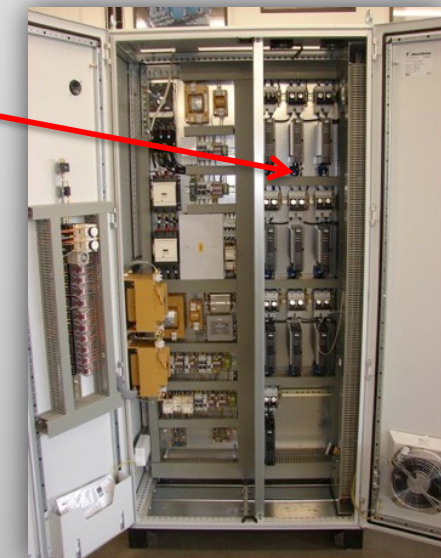
### Footprint reduction 1.0 by SoS

- Benefits footprint reduction of at least 25%
- Installation Cost reduction due to less interface cables
- Installation time reduction and an easier operation by your engineers and technicians

### New style SCR's

- Benefits easy calibration by laptop, no longer needed to adjust potential meters on life machine (480v)
- Replaceable 1 to 1 with the old style SCR's in the field

New Style SCR's →



# Solutions on Silicon BV

*Your ASM A400 & Epsilon service partner*

- **Equipment Support**  
PM, CM, Trouble shooting, Upgrading, Training and Onsite Service Contracts
- **Process Support**  
Process design, Improvement, Fab-to-Fab Transfer and Integration
- **Refurbishment**  
From custom to complete refurbishment
- **Relocation**  
Auditing, Fingerprinting, Decommissioning, Installation, Acceptance
- **Materials**  
Supplier of first class second source materials

